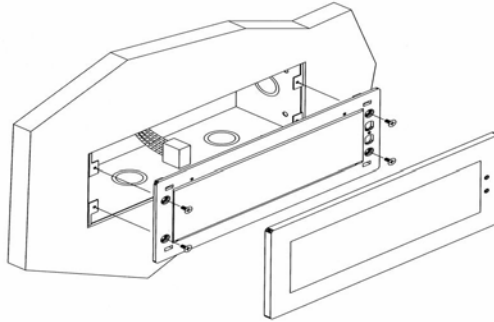


Installation Instructions

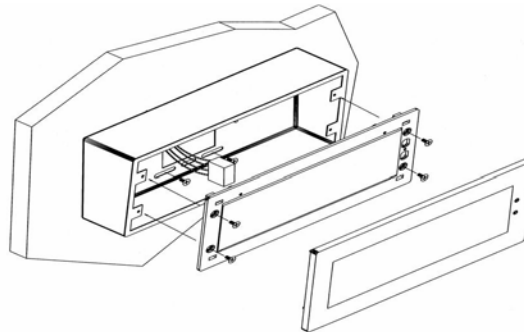
Flush Mount



Flush Mount Instructions

1. Cut a hole in the wall that measures the appropriate dimensions of the clock. (See page 4)
2. Mount the flush mount box into the wall.
3. Connect ground wire into flush mount box using Tooth Lockwasher and Machine Screw Nut (included in the kit).
4. Disconnect the red filter from the display panel.
5. Connect the wiring as shown on the wiring diagram.
6. Mount the display panel into the flush mount box using the four black machine screws (#6, included in the kit). Make sure the switches are on the right side.
7. Snap the red filter into the display panel.

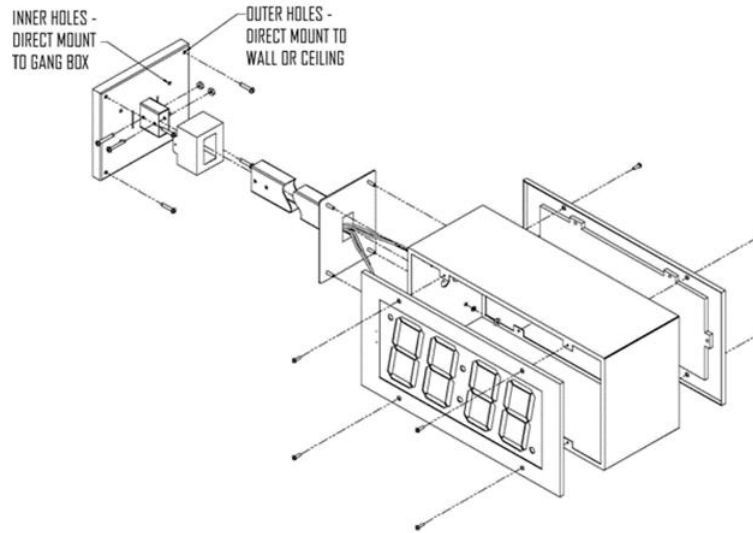
Wall Mount



Wall Mount Instructions

1. Mount the wall mount box into the double gang box using four machine screws (#6-32) including in the kit.
2. Connect ground wire into flush mount box using Tooth Lock Washer and Machine Screw Nut (included in the kit).
3. Disconnect the red filter from the display panel.
4. Connect the wiring as shown on the wiring diagram.
5. Mount the display panel into the flush mount box using four black machine screws (#6, included in the kit). Make sure the switches are on the right side.
6. Snap the red filter into the display panel.

Double Mount Clock

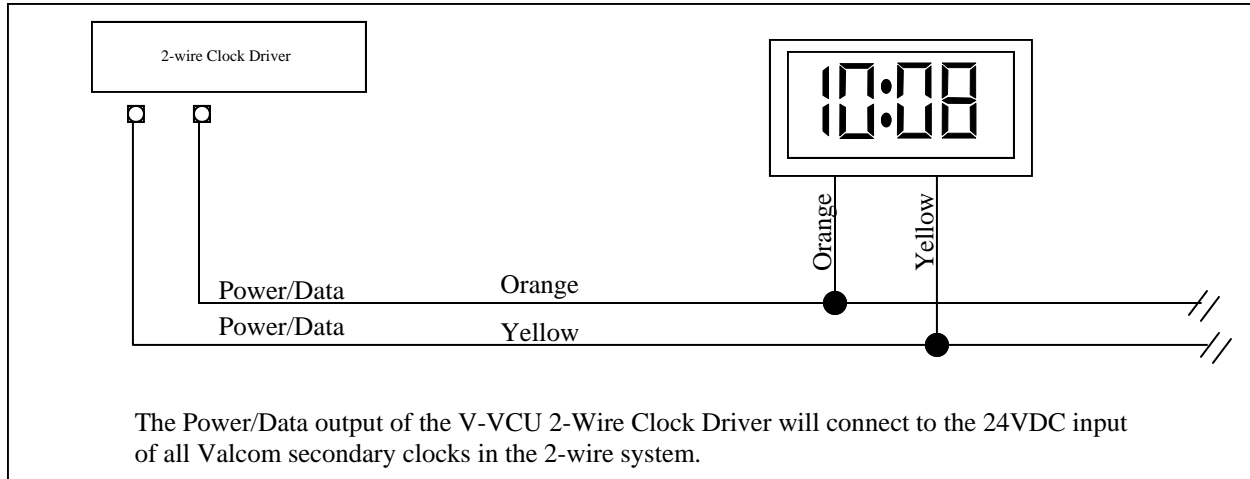


Double Mount Instructions

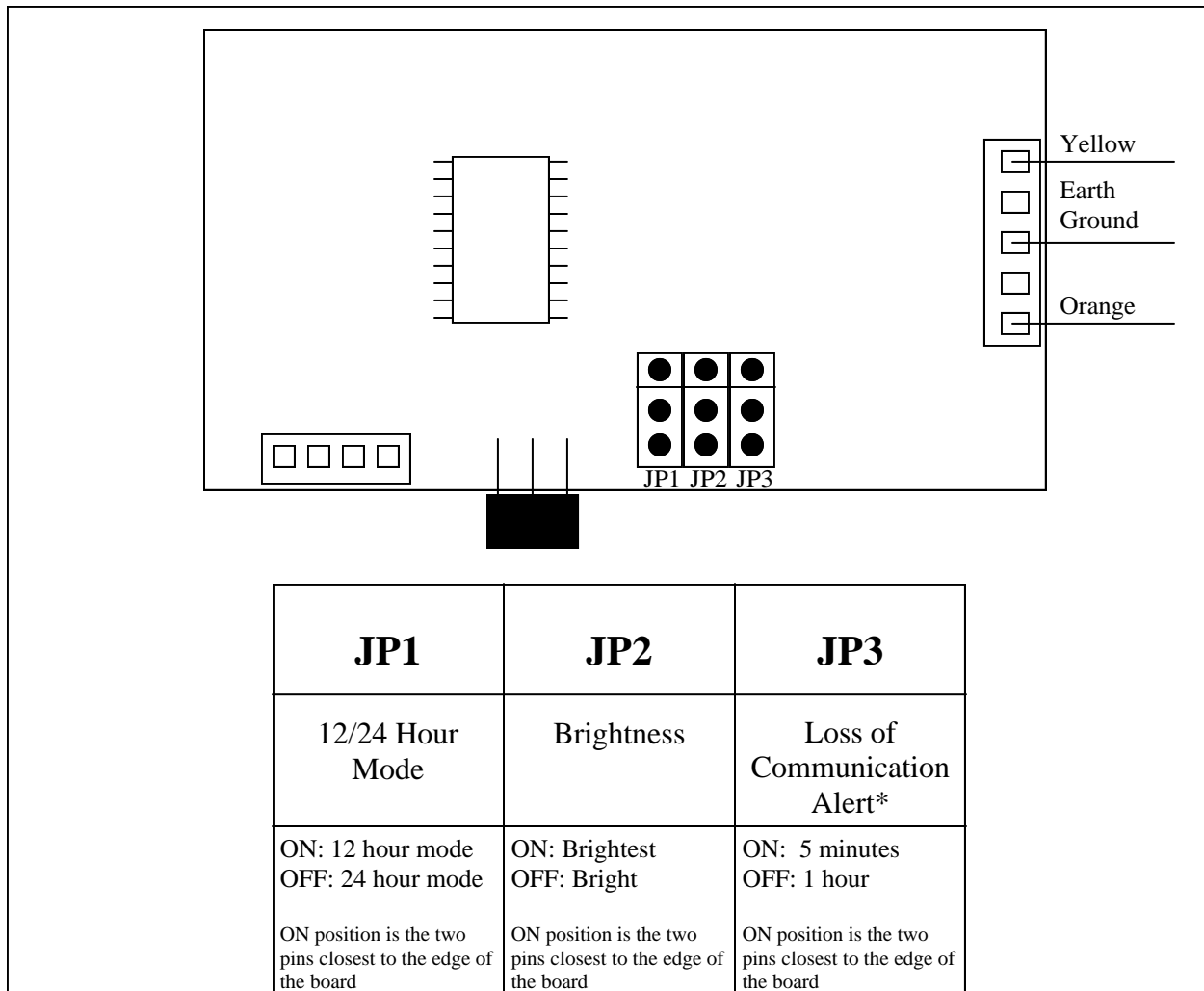
1. Insert wires through mounting bracket and mount to double gang box using (4) #6-32 screws included in the kit or mount directly to the wall using anchors (not included) if not using a double gang box as shown in above picture.
2. Mount the extension rod into the clock base using four #6 nuts and Tooth Lockwasher #6. (The double mount can be mounted either on the wall or on the ceiling).
3. Place cover on mounting rod and screw mounting rod to mounting bracket using two #8-32 screws and nuts provided in the kit.
4. Snap the cover over the mounting screws.
5. Insert the four Locking Hole Plugs (0.187") into the unused holes.
6. Connect ground wire into double mount box using the Tooth Lockwasher and Machine Screw Nut (included in the kit).
7. Disconnect the red filter from the display panel.
8. Connect the wiring as shown on the wiring diagram.
9. Mount the display panel on one side of the double mount box using four black machine screws (#6, included in the kit). Make sure the switches are on the right side.
10. Snap the red filter into the display panel.
11. Repeat steps 9-13 for the second clock.

Wiring Instructions

2 Wire Digital Communication



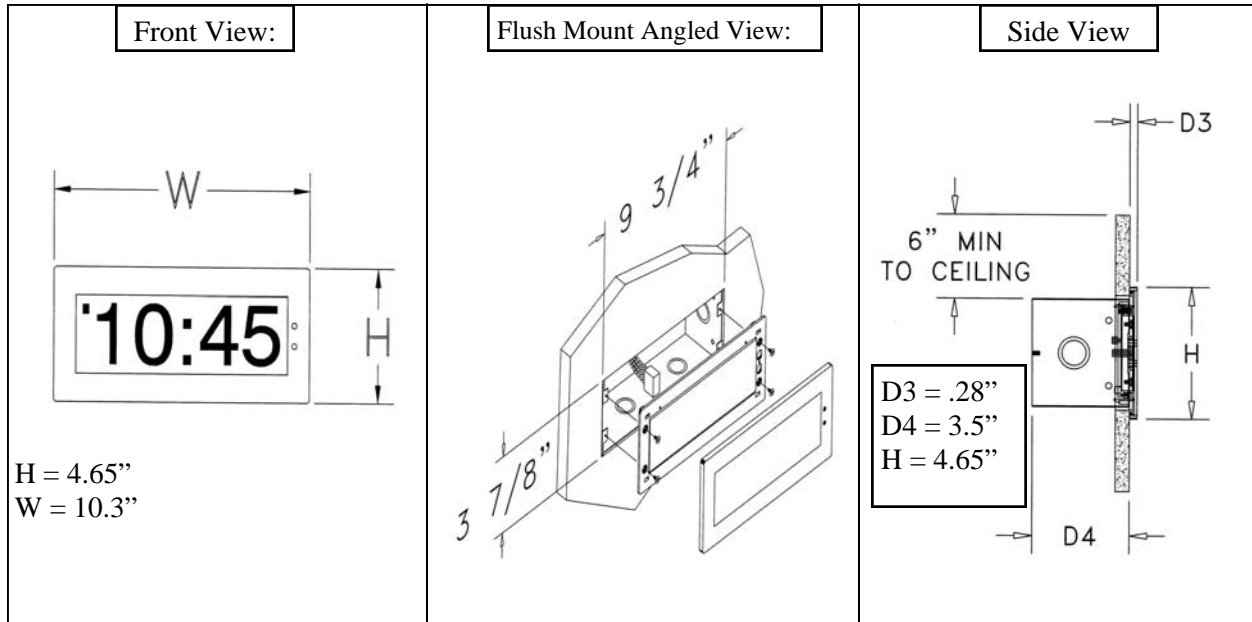
Jumper Settings



* If communication is present, then the clock will have a solid colon. If the communication is not present, then the colon will flash.

Flush Mount Picture 2.5"

Figure 1



Flush Mount Picture 4.0"

Figure 2

